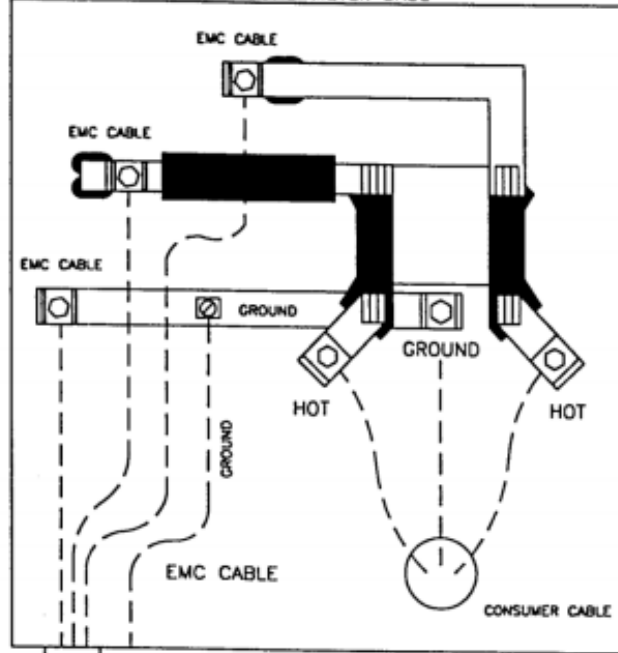
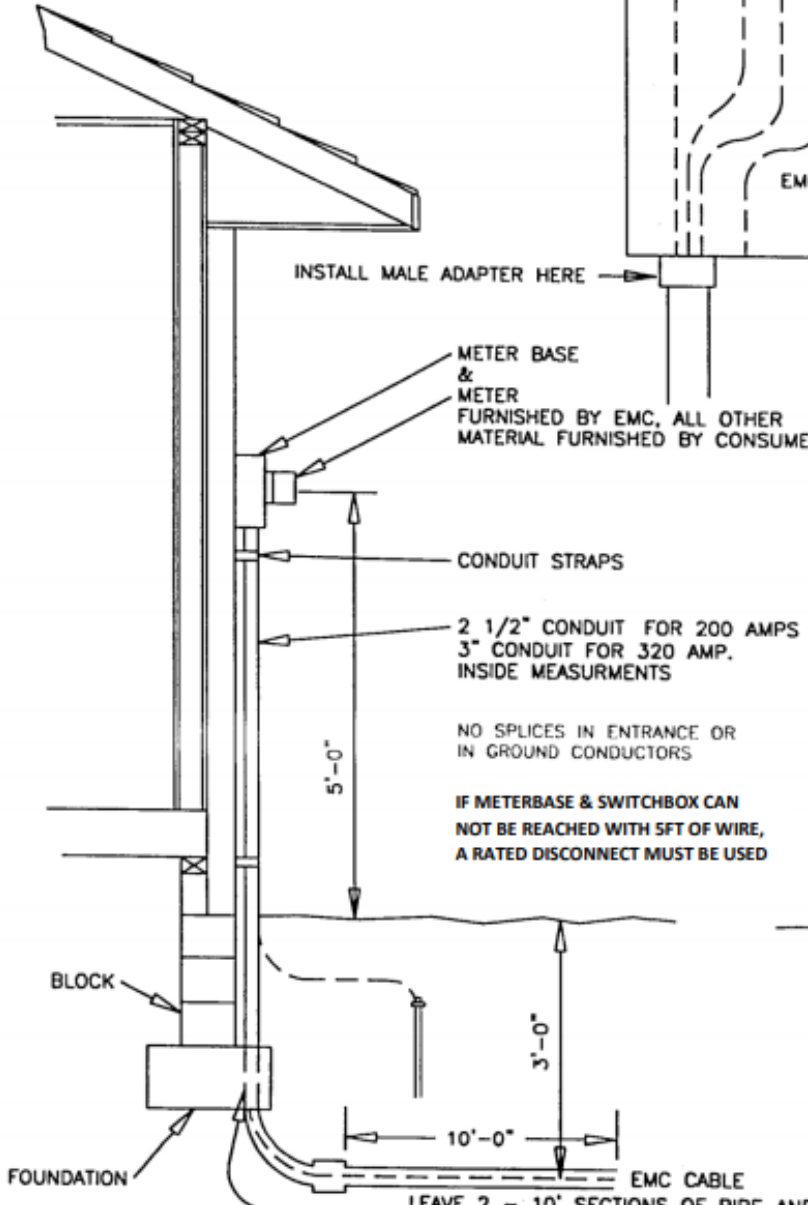


# UNDERGROUND SPECIFICATIONS

## STANDARD UNDERGROUND METER BASE

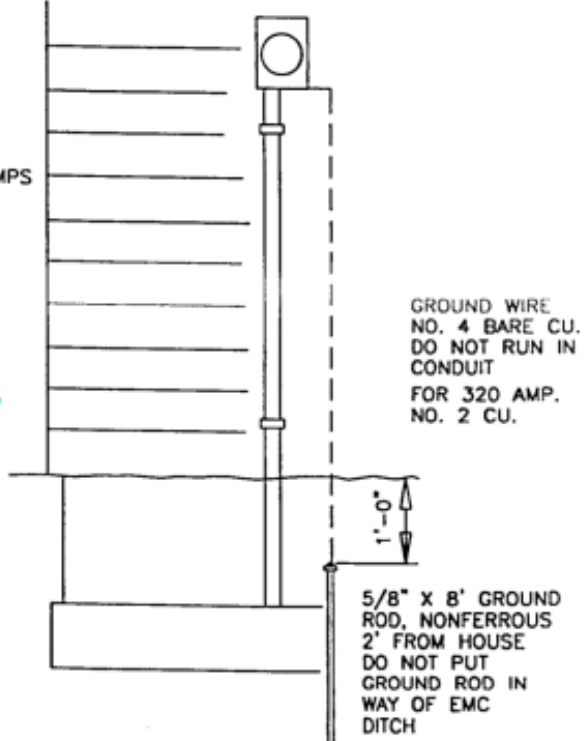


## SIDE VIEW



CONSUMER CAN USE MIDDLE KNOCK OUT, SIDE OR BACK

## FRONT VIEW



METER BASE & METER FURNISHED BY EMC, ALL OTHER MATERIAL FURNISHED BY CONSUMER.

CONDUIT STRAPS  
2 1/2" CONDUIT FOR 200 AMPS  
3" CONDUIT FOR 320 AMP.  
INSIDE MEASUREMENTS

NO SPLICES IN ENTRANCE OR IN GROUND CONDUCTORS

IF METERBASE & SWITCHBOX CAN NOT BE REACHED WITH 5FT OF WIRE, A RATED DISCONNECT MUST BE USED

LEAVE 2 - 10' SECTIONS OF PIPE AND SWEEPING "L" LAYING AT METER BASE. E.M.C. WILL INSTALL WHEN TRENCH IS DUG.  
CONSUMER RESPONSIBLE FOR FURNISHING SWEEPING "L" OUT FROM FOUNDATION WITH .10' SECTION OF CONDUIT. FOUNDATION MUST BE CHISELED OUT TO MAKE JOB EASIER, FOUNDATION CAN BE FORMED OUT BEFORE CONCRETE IS POURED.  
DO NOT CEMENT AROUND CONDUIT.